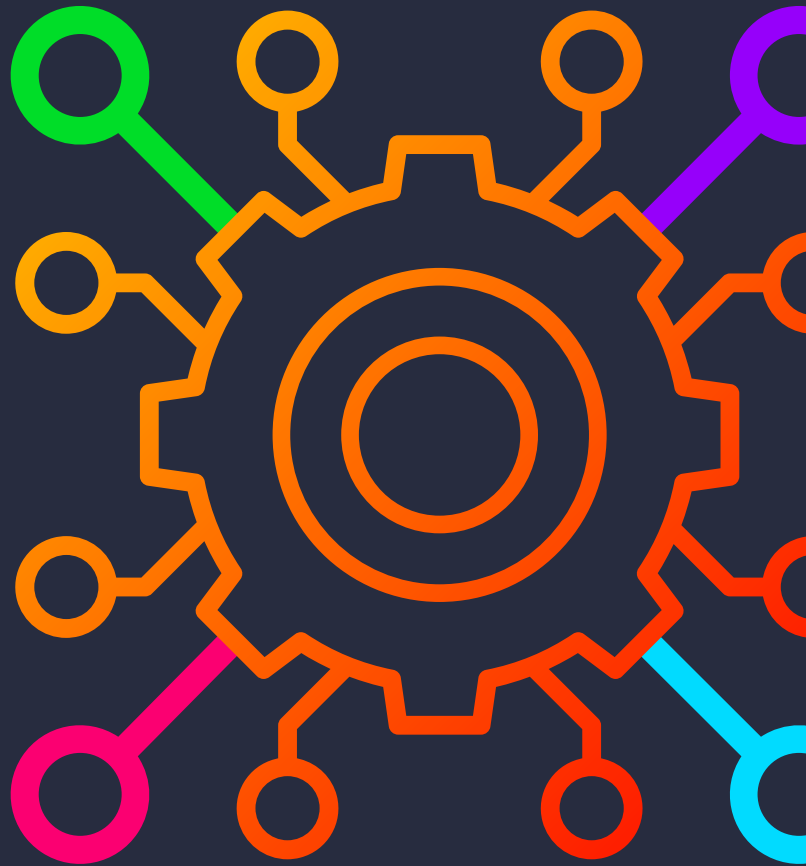




Beyond Automation

Driving Digitization and
Avoiding the Rekeying of Data



MARCH 2024

Kim Technologies Group, Inc © 2024



What we do

Kim makes it easier for organizations of all sizes to capture data, automate and generate documents and use the data to populate other systems such as Salesforce, SharePoint, Monday.com and iManage. Most users never see Kim, which drives adoption.

Kim's core solutions include the following:

Pg 3 - [Easy Data Capture via Kim Forms](#)

Pg 3 - [Document Automation and Generation](#)

Pg 4 - [Document Assembly](#)

Pg 4 - [Template Library](#)

Pg 5 - [Campaigns](#)

Pg 5 - [Integrations](#)





Easy Data Capture via Kim Forms



Take your compliance forms, internal checklists and/or any other documents designed to capture data from colleagues, clients and/or other stakeholders such as suppliers. Use Kim to quickly turn them into web applications. Publish the secure link. When a User clicks the link and completes and submits the form, they receive an email acknowledgment of receipt with a copy of their submission for their records. You get the completed record and the data. Use the record/data to analyze responses, report, create documents and/or populate other systems. The User Experience for both the user being asked for the information and the function receiving/managing responses is easy.

Document Automation and Generation



Take that low, mid or high complex letter, contract or any other document that you want users to self-serve or where individuals need to generate first drafts of contracts. Use Kim to create and publish the secure link in another system (i.e. Salesforce, SharePoint, iManage) or send in an email or embed the link in another document such as an FAQ. When the user clicks the link, completes the form and submits, it generates the document (i.e. a user clicks a link in Salesforce and generates a document that appears in the Salesforce record without the user ever seeing Kim). Most users never see Kim.





Document Assembly



Kim's Document Assembly module provides the ability to assemble documents by adding or removing relevant content based on rules (i.e. clauses or schedules). Super Users can create rules that, when triggered, include/exclude content from the 'Content Library' or the 'Document Library'. The 'Content Library' allows frequently used content/clauses to be used in documents. The 'Document Library' provides a collection of documents that can be appended or prepended based on rules during the assembly process. The module also ensures that page numbering and footers are working as expected despite changes to document size.

Template Library



Template Library is a centralized platform for managing an organization's templates. It is a golden source that is quick to take live, simple to use and easy to maintain and update. It ensures that every team member consistently uses the correct letters, forms, checklists, compliance records, or contracts. It ensures that the generated documents are accurate and appropriate for their intended purposes. It empowers organizations to effortlessly streamline their template maintenance and update processes. It can be branded to your organization and set up by business unit, function, document type or as required.





Campaigns



Our Campaign feature is designed to capture and/or confirm data from multiple recipients via one-to-many distribution. Its uses include information security checklists, compliance campaigns, RFP responses, client surveys and data cleansing exercises. Upload the form you want completing, send it to multiple recipients, and receive the responses and data. By incorporating personalized campaign creation, reminders, and comprehensive tracking and reporting, this feature ensures that compliance, data collection, and information sharing are streamlined for optimal efficiency.

Integrations



Combine all the above with Kim's low-code inbound and outbound API integration tools and organizations are empowered to connect systems and data sources more efficiently, reduce development costs, improve collaboration, and respond quickly to changing business needs. Kim's published APIs are a valuable tool for achieving digital transformation and enhancing the overall agility and competitiveness of an organization. Kim is often seen as a connector of systems.





About Kim

Kim assists knowledge workers around the globe to automate and generate documents, capture data and use that data to generate other documents or populate other systems.

With no software to download and enterprise-proven security, Kim synchs directly with your existing work environments, such as your web browser or MS Teams.

Kim takes your existing documents, letters, forms, contracts, compliance records and any other content and seamlessly converts them into web applications, which can be saved as templates, and then used to capture relevant information.

No need for a lengthy implementation process, extensive user training, or side-by-side help from IT.

Kim helps companies improve the client experience, get more done with the same number of resources, optimize internal processes and reduce error-prone manual rekeying.